

# Gradel Scales

① E Natural Minor - 2 octaves

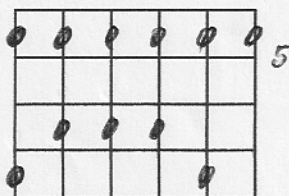
② E Blues - 2 octaves

③ G Pentatonic Major - 2 octaves

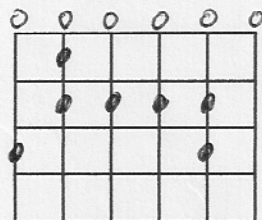
④ A Major

⑤ A Pentatonic Minor

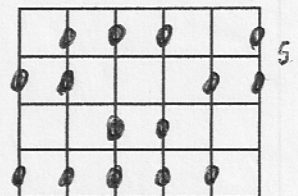
A Pentatonic Minor



E Blues



A Major



# Short Pop/Rock Guitar Melody ①

## Last Time - Rolling Stones

①

E D A

## Paint It Black - Rolling Stones

②

Dm A

## Ohh La La - The Faces

③

D D Em Em G

## Dancing In The Dark - Bruce Springsteen

④

B

## Maggie May - Rod Stewart

⑤

D Em

G D

# Young Folks - Peter Bjorn and John

F Dm

C Am

F Dm

Am %

x x F

x x 0 Dm

x 0 0 C

0 Am 0

# Nirvana Solos :

## ① Smells Like Teen Spirit

Handwritten guitar notation for the first system of "Smells Like Teen Spirit". It features a treble clef, a 4/4 time signature, and a key signature of one flat. The notation is written on three staves (T, A, B). Above the staff, four chords are indicated: F5, Bb5, Ab5, and Db5. The notes on the treble staff are: F5 (F), Bb5 (Bb), Ab5 (Ab), and Db5 (Db). The notes on the bass staff are: F5 (F), Bb5 (Bb), Ab5 (Ab), and Db5 (Db). The notes on the middle staff are: F5 (F), Bb5 (Bb), Ab5 (Ab), and Db5 (Db). The notes on the bass staff are: F5 (F), Bb5 (Bb), Ab5 (Ab), and Db5 (Db).

Handwritten guitar notation for the second system of "Smells Like Teen Spirit". It features a treble clef, a 4/4 time signature, and a key signature of one flat. The notation is written on three staves (T, A, B). Above the staff, four chords are indicated: F5, Bb5, Ab5, and Db5. The notes on the treble staff are: F5 (F), Bb5 (Bb), Ab5 (Ab), and Db5 (Db). The notes on the bass staff are: F5 (F), Bb5 (Bb), Ab5 (Ab), and Db5 (Db). The notes on the middle staff are: F5 (F), Bb5 (Bb), Ab5 (Ab), and Db5 (Db). The notes on the bass staff are: F5 (F), Bb5 (Bb), Ab5 (Ab), and Db5 (Db).

Handwritten guitar notation for the third system of "Smells Like Teen Spirit". It features a treble clef, a 4/4 time signature, and a key signature of one flat. The notation is written on three staves (T, A, B). Above the staff, four chords are indicated: F5, Bb5, Ab5, and Db5. The notes on the treble staff are: F5 (F), Bb5 (Bb), Ab5 (Ab), and Db5 (Db). The notes on the bass staff are: F5 (F), Bb5 (Bb), Ab5 (Ab), and Db5 (Db). The notes on the middle staff are: F5 (F), Bb5 (Bb), Ab5 (Ab), and Db5 (Db). The notes on the bass staff are: F5 (F), Bb5 (Bb), Ab5 (Ab), and Db5 (Db). The system ends with a double bar line and a repeat sign, with a handwritten "x4" indicating four repetitions.

## ② Come as you are

Handwritten guitar notation for the first system of "Come as you are". It features a treble clef, a 4/4 time signature, and a key signature of one flat. The notation is written on three staves (T, A, B). Above the staff, four chords are indicated: F5, Bb5, Ab5, and Db5. The notes on the treble staff are: F5 (F), Bb5 (Bb), Ab5 (Ab), and Db5 (Db). The notes on the bass staff are: F5 (F), Bb5 (Bb), Ab5 (Ab), and Db5 (Db). The notes on the middle staff are: F5 (F), Bb5 (Bb), Ab5 (Ab), and Db5 (Db). The notes on the bass staff are: F5 (F), Bb5 (Bb), Ab5 (Ab), and Db5 (Db).

Handwritten guitar notation for the second system of "Come as you are". It features a treble clef, a 4/4 time signature, and a key signature of one flat. The notation is written on three staves (T, A, B). Above the staff, four chords are indicated: F5, Bb5, Ab5, and Db5. The notes on the treble staff are: F5 (F), Bb5 (Bb), Ab5 (Ab), and Db5 (Db). The notes on the bass staff are: F5 (F), Bb5 (Bb), Ab5 (Ab), and Db5 (Db). The notes on the middle staff are: F5 (F), Bb5 (Bb), Ab5 (Ab), and Db5 (Db). The notes on the bass staff are: F5 (F), Bb5 (Bb), Ab5 (Ab), and Db5 (Db). The system ends with a double bar line and a repeat sign, with a handwritten "x4" indicating four repetitions.

Handwritten guitar notation for the third system of "Come as you are". It features a treble clef, a 4/4 time signature, and a key signature of one flat. The notation is written on three staves (T, A, B). Above the staff, four chords are indicated: F5, Bb5, Ab5, and Db5. The notes on the treble staff are: F5 (F), Bb5 (Bb), Ab5 (Ab), and Db5 (Db). The notes on the bass staff are: F5 (F), Bb5 (Bb), Ab5 (Ab), and Db5 (Db). The notes on the middle staff are: F5 (F), Bb5 (Bb), Ab5 (Ab), and Db5 (Db). The notes on the bass staff are: F5 (F), Bb5 (Bb), Ab5 (Ab), and Db5 (Db).

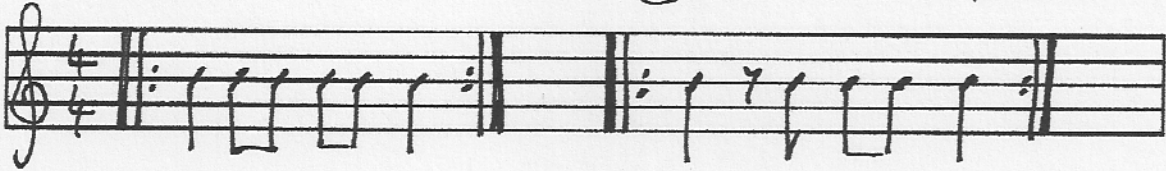
# Improvisation Techniques - Using Rhythm

practice applying these rhythm patterns to the scales

- make your own patterns up!

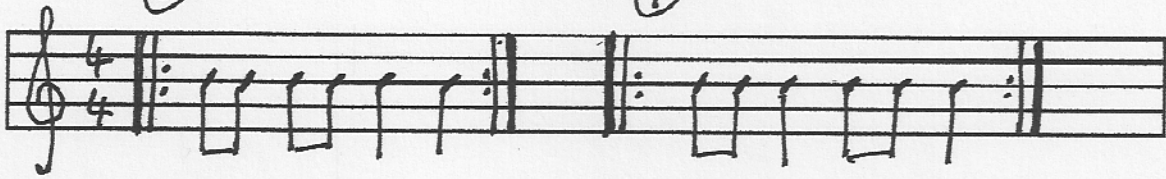
①

②



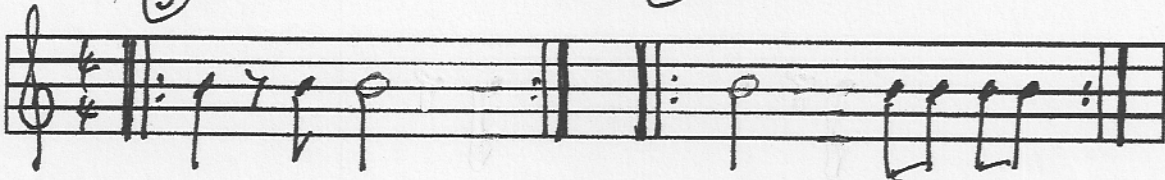
③

④



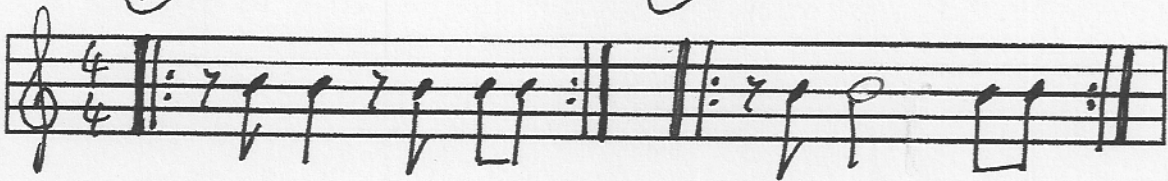
⑤

⑥



⑦

⑧



⑨ Syncopation

⑩ Triplets



## Coordination Exercises

The most important aspect of developing good picking technique is the coordination of your left and right hands. You must get the pick to strike the string at the exact same instant that the fretting hand is pressing the note down. The following exercises are designed to help you develop good coordination between your left and right hands.

### The Group of Three

This first exercise involves playing through the minor pentatonic scale in groups of three. This type of repetitive pattern is called a **sequence**. (Note: the "3" above each group of notes indicates a **triplet**: three notes in one beat.)

(cont. same picking pattern)

5 8 5 8 5 7 5 7 5 7 5 7 5 7 5 8

5 8 5 8 5 8 5 8 5 7 5 7 5 7 5 7 5 7 5 7 5 8 5

## The Group of Four

This first exercise involves playing through the minor pentatonic scale in groups of four. The tricky part to this pattern is that you often have to use the same left hand finger twice in a row. To do this you'll have to roll your fingertip from the first note to the second.

(cont. simile)

1 4 1 3 4 1 3 1 (roll) 1 3 1 3 (roll) 3 1 3 1 (roll) 1 3 1 3 (roll) 1 3 1 (roll)

5 8 5 7 8 5 7 5 5 7 5 7 7 5 7 5 5 7 5 7 7 5 7 5

1 3 1 4 3 1 4 1 (roll) 1 4 1 4 (roll) 4 1 4 1 (roll) 1 4 1 3 4 1 3 1 (roll)

5 7 5 8 7 5 8 5 5 8 5 8 8 5 8 5 5 8 5 7 8 5 7 5

1 3 1 3 (roll) 3 1 3 1 (roll) 1 3 1 3 (roll) 1 3 1 4 1 (roll)

5 7 5 7 7 5 7 5 5 7 5 7 7 5 7 5 5 7 5 8 5

# A Major Scale Exercises

## ① 3rds

## ② 3rds ↑ ↓

## ③ Group of 3 in Triplets



# 12 BAR BLUES IN E

**Bar 1:** E

T: 4/4

A: 2 4 2 4

B: 0 0 0 0

Bar 2: /

Bar 3: /

Bar 4: /

**Bar 5:** A

T: /

A: 2 4 2 4

B: 0 0 0 0

Bar 6: /

**Bar 7:** E

T: /

A: 2 4 2 4

B: 0 0 0 0

Bar 8: /

**Bar 9:** B7

T: 0

A: 2

B: 2

**Bar 10:** A

T: /

A: 2 4 2 4

B: 0 0 0 0

**Bar 11:** E

T: 4 4 3 3 2 2

A: 4 4 3 3 2 2

B: 0

**Bar 12:** B7

T: 0

A: 2

B: 0 1 2 2

BLUES TURNAROUND

BLUES SHUFFLE RHYTHM :-

T: 4/4

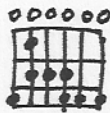
A: 2 4 2 4 2 4 2 4 2 4

B: 4/4

0 0 0 0 0 0 0 0 0 0

Triplet markings (3) are placed over the notes in the treble clef.

THE BLUES SCALE IN E



T: 0 3 0 3 0 3

A: 2 2 3 0 3 0

B: 0 3 0 1 2 0 2 0 2 3

T: 0 3 0 3 0 3

A: 3 2 0 2 0 2 1 0 3 0

B: 2 0 2 1 0 3 0

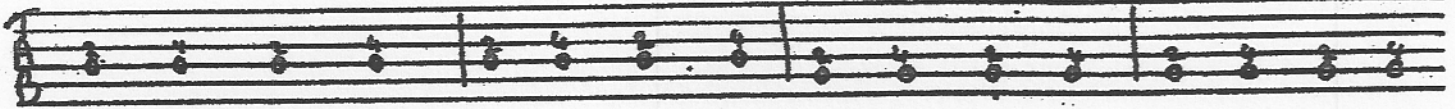
12 BAR BLUES

A-



D

A



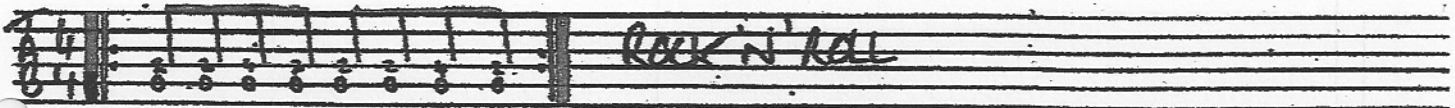
E

D

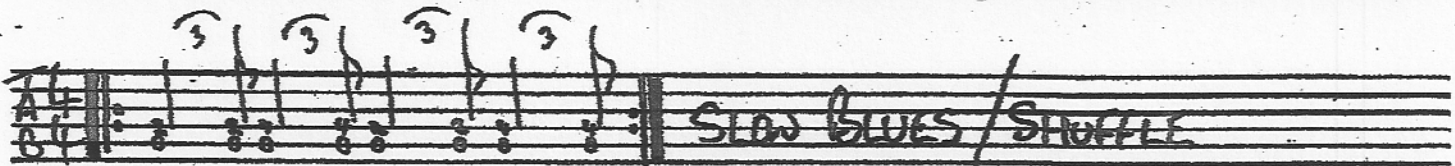
A



\* BLUES TURNAROUND \*



ROCK N' ROLL



SLOW BLUES / SHUFFLE

# 12-Bar Blues In A - Bassline

**A**

**D A**

**E D A**

## Rock 'n' Roll

*n v n v n v n v n v n v n v n v*

## Blues Shuffle

*n3 v n3 v n3 v n3 v n3 v n3 v n3 v*

# BLUES TURNAROUNDS

A

9 9 8 8 7 7 6 5 6 7

A

10 10 10 10 10 10 10 8 7 8 7

A

0 4 4 5 5 6 6 7 8 7

# BLUES MELODY

A

TAB

5 5 5 5 5 5 5 5 7 5

T  
A  
B

D A

T  
A  
B

E D A

12 12 12 12 12 12 12 12 10 10 etc

T  
A  
B

T  
A  
B

FORM

T  
A  
B

INTRO | MELODY | IMPROV. | MELODY | END

12 BAR 12 12

T  
A  
B

Status Quo - 12 bar in A

A

D

E

Chuck Berry Licks in A

①

②

# Beginner Exercises ①

①

8 5 6 7 5 7 5

②

8 5 6 7 5 7 5 5

③

8 5 6 7 5 7 5 7 9 9

④

8 5 6 7 5 7 5 7 5 7 6 5

⑤

5 6 7 5 7 5 7 5 7 5

# BOOGIE EXERCISES (2)

①

5 7 5 7 5 7 5 8 5 8

②

5 7 5 7 5 7 5 8 5 8

H H H H H

③

5 7 5 7 5 7 7 5

④

5 7 5 7 5 7 5 7 5 7 5 7 5 7

⑤

7 5 7 5 7 5 7 5 8 5 8 5 8 5 8



# Rock/Pop Guitar Solos ①

## ① Wonderful Tonight - Eric Clapton

Handwritten guitar notation for the first system of "Wonderful Tonight" by Eric Clapton. The notation is on a three-line staff (T, A, B strings) in 4/4 time. The top line (T) has notes 15, 14, 16, 14, 12, 14, 14, 16, 14, 12, 14. Above the staff are bar lines and a "Vib" marking. The bottom line (B) has notes 14, 16, 14, 12, 14, 14, 16, 14, 12, 14. Above the staff are bar lines and a "Vib" marking.

Handwritten guitar notation for the second system of "Wonderful Tonight" by Eric Clapton. The notation is on a three-line staff (T, A, B strings) in 4/4 time. The top line (T) has notes 14, 16, 14, 12, 14, 12, 13, 12. Above the staff are bar lines and a "Vib" marking.

## ② American Idiot - Green Day

Handwritten guitar notation for the first system of "American Idiot" by Green Day. The notation is on a three-line staff (T, A, B strings) in 4/4 time. The top line (T) has notes 6, 6, 6, 6, (6), 6, (6), 6, (6), 6, 2, 6. Above the staff are bar lines and "D65" markings. The bottom line (B) has notes 7, 7, 7, 7, 7, 7, 7, 7, 7, 7, 7, 7. Above the staff are bar lines and "D65" markings.

Handwritten guitar notation for the second system of "American Idiot" by Green Day. The notation is on a three-line staff (T, A, B strings) in 4/4 time. The top line (T) has notes 8, 8, 8, 8, (8), 6, (6), 8, (8), 8, 6, 5. Above the staff are bar lines and "A65" markings. The bottom line (B) has notes 7, 7, 7, 7, 7, 7, 7, 7, 7, 7, 7, 7. Above the staff are bar lines and "A65" markings.

Handwritten guitar notation for the third system of "American Idiot" by Green Day. The notation is on a three-line staff (T, A, B strings) in 4/4 time. The top line (T) has notes 8, 8, 8, 5, (5), 8, (6), 5, (5), 8, (8), 8, (8), 8. Above the staff are bar lines and "E65" markings. The bottom line (B) has notes 7, 7, 7, 7, 7, 7, 7, 7, 7, 7, 7, 7, 7. Above the staff are bar lines and "E65" markings.

Handwritten guitar notation for the fourth system of "American Idiot" by Green Day. The notation is on a three-line staff (T, A, B strings) in 4/4 time. The top line (T) has notes (8) and a "Vib" marking. Above the staff are bar lines and "A65" markings. The bottom line (B) has notes 7, 7, 7, 7, 7, 7, 7, 7, 7, 7, 7, 7. Above the staff are bar lines and "A65" markings.

# BLUES PHRASES ①

①

②

③

④

⑤

⑥

vibram = Vibrato      H = Hammer On      P = Pull off  
 BU = Bend Up      S = Slide

# BLUES PHRASES ②

①

COUNT 1 2 3 4

②

③

④

BD = BEND DOWN BU = BEND UP RB = RELEASE BEND  
 H = HAMMER (ON) P = PULL OFF Vib<sub>wavy</sub> = VIBRATO

# Blues Licks in A

①

Handwritten musical notation for lick 1. It consists of a single staff with a treble clef and a 4/4 time signature. The notes are 7, 5, 7, 8, 7, 5, 7, 5, 7. Above the staff, there are markings: a sharp sign above the 7th note, and 'P' above the 8th, 9th, and 10th notes. The staff is divided into two measures by a bar line.

②

Handwritten musical notation for lick 2. It consists of a single staff with a treble clef and a 4/4 time signature. The notes are 7, 5, 7, 6, 5, 3, 5, 3, 5. Above the staff, there are slanted lines above the 7th, 8th, 9th, and 10th notes. The staff is divided into two measures by a bar line.

③

Handwritten musical notation for lick 3. It consists of a single staff with a treble clef and a 4/4 time signature. The notes are 5, 7, 5, 7, 5, 7, 5, 7, 5, 7, 5, 7, 5, 7, 5, 8, 5. Above the staff, there are slanted lines above the 7th, 8th, 9th, 10th, 11th, and 12th notes. Below the staff, there are markings: 'H P' under the 7th note, 'P' under the 9th note, 'H P' under the 11th note, and 'P' under the 13th note. The staff is divided into two measures by a bar line.

④

Handwritten musical notation for lick 4. It consists of a single staff with a treble clef and a 4/4 time signature. The notes are 7, 5, 7, 5, 7, 5, 7, 5, 7, 5, 7, 5, 7, 5, 8, 5, 8, 5. Above the staff, there are slanted lines above the 7th, 8th, 9th, 10th, 11th, and 12th notes. Below the staff, there are markings: 'P' under the 7th note, 'P' under the 9th note, 'P' under the 11th note, 'P' under the 13th note, 'P' under the 15th note, and 'P' under the 17th note. The staff is divided into two measures by a bar line.

⑤

Handwritten musical notation for lick 5. It consists of a single staff with a treble clef and a 4/4 time signature. The notes are 5, 7, 5, 7, 5, 7, 5, 7. Above the staff, there are slanted lines above the 7th, 8th, 9th, and 10th notes. Below the staff, there are markings: 'P' under the 7th note and 'P' under the 9th note. The staff is divided into two measures by a bar line.

⑥

Handwritten musical notation for lick 6. It consists of a single staff with a treble clef and a 4/4 time signature. The notes are 5, 7, 5, 7, 7, 7, 5, 7, 5, 7, 7, 7, 5. Above the staff, there are slanted lines above the 7th, 8th, 9th, 10th, and 11th notes. Below the staff, there are markings: 'P' under the 7th note and 'P' under the 9th note. The staff is divided into two measures by a bar line.

# Improvisation Techniques - Repetition ideas in A minor

①

②

③

④

⑤

# Guns & Roses

## Paradise City

Handwritten guitar notation for the first system of "Paradise City". It features three staves (T, A, B) in 4/4 time. The top staff has a treble clef and a key signature of one sharp (F#). The first measure is marked with a G5 chord. The notation includes various fret numbers (11, 12, 14, 15, 16) and a double bar line with a repeat sign.

Handwritten guitar notation for the second system of "Paradise City". It features three staves (T, A, B) in 4/4 time. The first measure is marked with a B5 chord, followed by C5 and G5 chords. The notation includes fret numbers (13, 15, 14, 16, 12, 14) and a double bar line.

Handwritten guitar notation for the third system of "Paradise City". It features three staves (T, A, B) in 4/4 time. The first measure is marked with a B5 chord, followed by C5 and G5 chords. The notation includes fret numbers (13, 15, 13, 15, 15, 13, 15, 13, 12, 13, 12, 13, 12, 13, 12, 13, 12) and a double bar line. A "vib" (vibrato) marking is present at the end of the system.

## Sweet Child of Mine

Handwritten guitar notation for the first system of "Sweet Child of Mine". It features three staves (T, A, B) in 4/4 time. The notation includes fret numbers (15, 14, 12, 14, 14, 15, 14, 12, 14, 14) and a double bar line.

Handwritten guitar notation for the second system of "Sweet Child of Mine". It features three staves (T, A, B) in 4/4 time. The notation includes fret numbers (12, 15, 14, 12, 14, 14, 15, 14, 12, 14, 14) and a double bar line.

Handwritten guitar notation for the third system of "Sweet Child of Mine". It features three empty staves (T, A, B) in 4/4 time, indicating a section that has not been transcribed.

# Short Pop/Rock Melodies ②

## ① Never Let Go - Third Eye Blind

Rhythm  
Guitar

Handwritten guitar notation for Rhythm Guitar in 4/4 time. The piece is in G major. The notation shows a sequence of chords and notes: G (open), A (open), B (open), C (open), D (open), E (open), F# (open), G (open), A (open), B (open), C (open), D (open), E (open), F# (open), G (open). The notes are written on the treble clef staff with stems pointing up.

Lead  
Guitar

Handwritten guitar notation for Lead Guitar in 4/4 time. The piece is in G major. The notation shows a sequence of notes: G (open), A (open), B (open), C (open), D (open), E (open), F# (open), G (open), A (open), B (open), C (open), D (open), E (open), F# (open), G (open). The notes are written on the treble clef staff with stems pointing up.

## ② Love Will Come Through - Travis

Handwritten guitar notation for 'Love Will Come Through' in 3/4 time. The piece is in G major. The notation shows a sequence of chords: Am, F, C, G. The notes are written on the treble clef staff with stems pointing up.

## ③ Move On Up - Curtis Mayfield

Handwritten guitar notation for 'Move On Up' in 4/4 time. The piece is in G major. The notation shows a sequence of chords: F#m7, Em7. The notes are written on the treble clef staff with stems pointing up.


F#m7 Bm7 11.

Handwritten guitar notation for 'Move On Up' in 4/4 time. The piece is in G major. The notation shows a sequence of chords: F#m7, Bm7. The notes are written on the treble clef staff with stems pointing up.

12.

Handwritten guitar notation for 'Move On Up' in 4/4 time. The piece is in G major. The notation shows a sequence of chords: F#m7, Bm7. The notes are written on the treble clef staff with stems pointing up.

# Black Magic Woman - Peter Green

Am 

T 4 } 5 8 5 8 5 | 8 5 (5)

A } | | | | | | | |

B 4 } | | | | | | | |

Am

Em 

Em

T } 5 8 5 8 5 | 7 5 (5) | 5 5 5

A } | | | | | | | |

B } | | | | | | | |

Am

Am

T 8 5 8 5 8 | 5 8 5 5 (5) 5 5 7

A | | | | | | | |

B | | | | | | | |

Dm 

Dm

Am

T 0 | 5 5 5 | 8 5 8 5 8 5

A (7) | 7 | | | | | | |

B | | | | | | | |

Em

Am  
0

Am

T 7 5 7 5 7 5 7 5

A | | | | | | | |

B | | | | | | | |

T

A

B



# D Major

# D Natural Minor

# D Pentatonic Minor

A 7-string fretboard diagram for the D Major scale. The notes are: D (open), E (1), F# (2), G (3), A (4), B (5), C# (6), D (7). The notes are written across the strings from the 1st to the 7th.

A 7-string fretboard diagram for the D Natural Minor scale. The notes are: D (open), E (1), F (2), G (3), A (4), B (5), C (6), D (7). The notes are written across the strings from the 1st to the 7th.

A 7-string fretboard diagram for the D Pentatonic Minor scale. The notes are: D (open), E (1), F (2), G (3), A (4), C (6), D (7). The notes are written across the strings from the 1st to the 7th.

An empty 7-string fretboard diagram.

An empty 7-string fretboard diagram.

# C Major

# A Natural Minor

# A Pentatonic Minor

# C Pentatonic Major

# A Blues

A 7-string fretboard diagram for the C Major scale. The notes are: C (open), D (1), E (2), F (3), G (4), A (5), B (6), C (7). The notes are written across the strings from the 1st to the 7th.

A 7-string fretboard diagram for the A Natural Minor scale. The notes are: A (open), B (1), C (2), D (3), E (4), F (5), G (6), A (7). The notes are written across the strings from the 1st to the 7th.

A 7-string fretboard diagram for the A Pentatonic Minor scale. The notes are: A (open), B (1), C (2), D (3), E (4), G (6), A (7). The notes are written across the strings from the 1st to the 7th.

A 7-string fretboard diagram for the C Pentatonic Major scale. The notes are: C (open), D (1), E (2), G (4), A (5), C (7). The notes are written across the strings from the 1st to the 7th.

A 7-string fretboard diagram for the A Blues scale. The notes are: A (open), B (1), C (2), D (3), E (4), F (5), G (6), A (7). The notes are written across the strings from the 1st to the 7th.

# SPIDER EXERCISES

## Exercise 1: Ascending

1

TAB

5 6 7 8 5 6 7 8 5 6 7 8 5 6 7 8

♩ V ♩ V ♩ V ♩ V ♩ V ♩ V ♩ V ♩ V ♩ V ♩ V

## Descending

4

8 7 6 5 8 7 6 5 8 7 6 5 8 7 6 5 8 7 6 5

♩ V ♩ V ♩ V ♩ V ♩ V ♩ V ♩ V ♩ V ♩ V ♩ V

## Exercise 2: Over The Complete Fretboard

7

1 2 3 4 1 2 3 4 1 2 3 4 1 2 3 4 5 2 3 4 5 2 3 4

♩ V ♩ V ♩ V ♩ V ♩ V ♩ V ♩ V ♩ V ♩ V ♩ V

etc .....

5 2 3 4 5 2 3 4 5 2 3 4 5 6 3 4 5 6 3 4 5 6 3 4

♩ V ♩ V ♩ V ♩ V ♩ V ♩ V ♩ V ♩ V ♩ V ♩ V