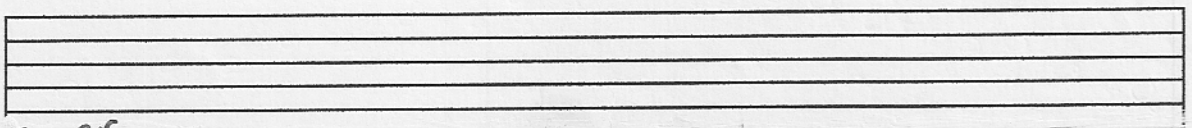
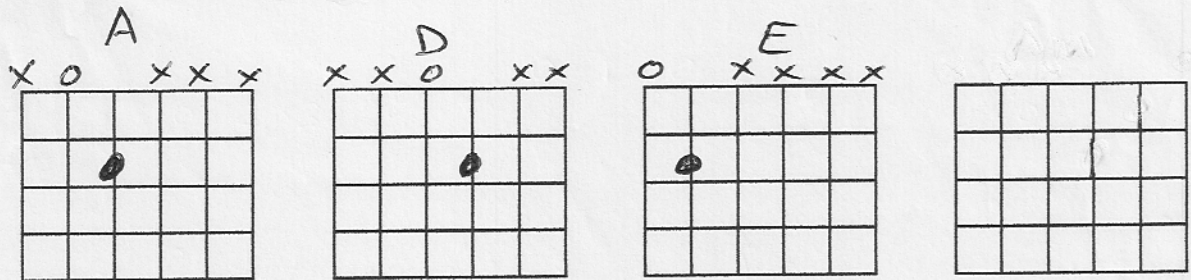
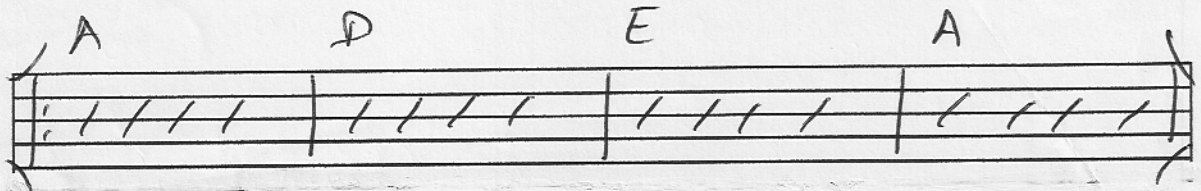
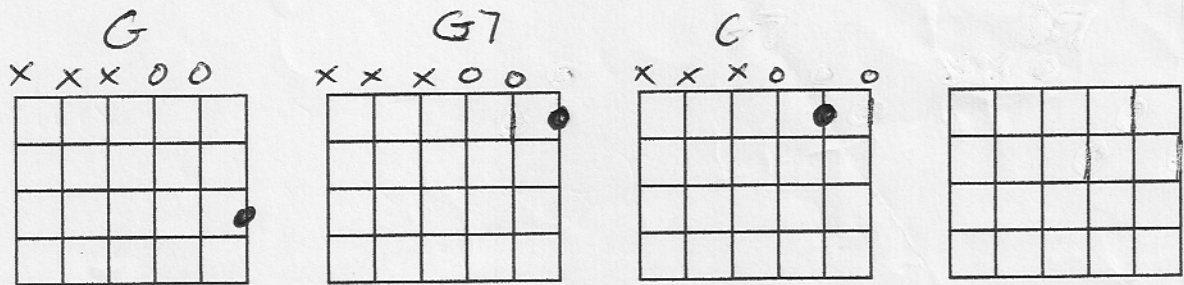
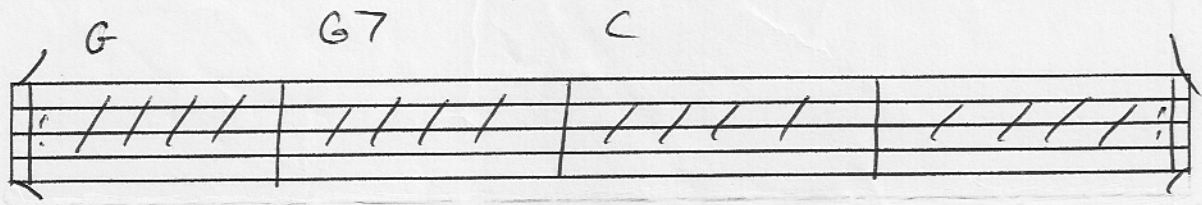
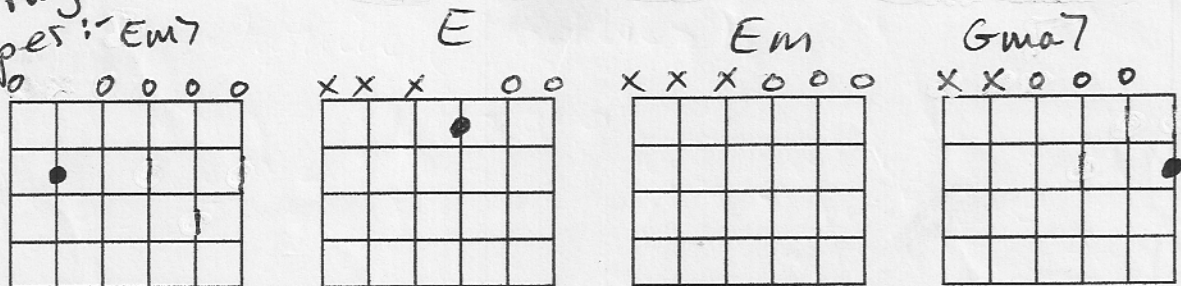


# ! Finger chords :-



Other 1 Finger  
Chord Shapes :- Em7



# RIFFS

PETER GUNN

A handwritten guitar riff for Peter Gunn. The notation is on a six-line staff with a treble clef and a 4/4 time signature. The bass line consists of the following fret numbers: 0, 0, 2, 0, 3, 0, 5, 3. The riff is enclosed in a double bar line with repeat dots on both ends.

PIECE OF ME

SKID ROW

A handwritten guitar riff for Piece of Me. The notation is on a six-line staff with a treble clef and a 4/4 time signature. The bass line consists of the following fret numbers: 0, 0, 7, 6, 5, 0, 2, 3. The riff is enclosed in a double bar line with repeat dots on both ends.

SHAKING ALL OVER

A handwritten guitar riff for Shaking All Over. The notation is on a six-line staff with a treble clef and a 4/4 time signature. The bass line consists of the following fret numbers: 0, 0, 2, 2, 0, 0, 2, 2. The riff is enclosed in a double bar line with repeat dots on both ends.

BILLIE JEAN

A handwritten guitar riff for Billie Jean. The notation is on a six-line staff with a treble clef and a 4/4 time signature. The bass line consists of the following fret numbers: 2, 4, 2, 4, 2, 4, 2, 4. The riff is enclosed in a double bar line with repeat dots on both ends.

AGITATED

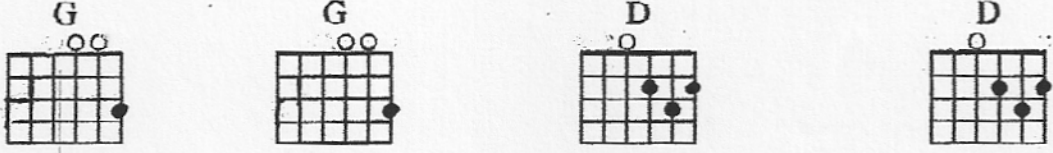
MUSE

A handwritten guitar riff for Agitated. The notation is on a six-line staff with a treble clef and a 4/4 time signature. The bass line consists of the following fret numbers: 0, 0, 4, 5, 6, 7, 7, 7. The riff is enclosed in a double bar line with repeat dots on both ends.

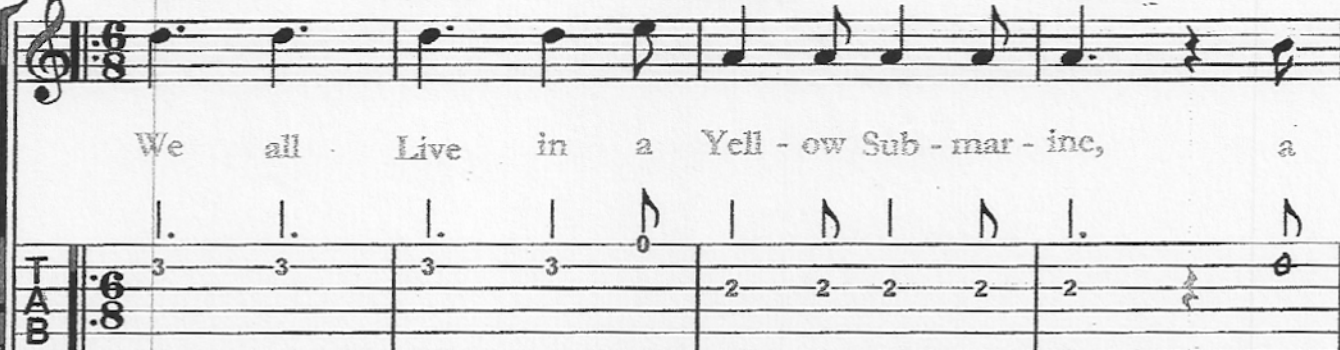


# Yellow Submarine

G G D D

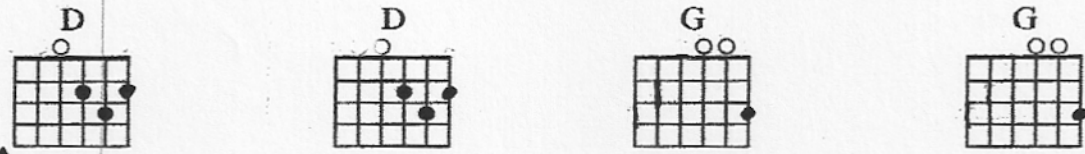


We all Live in a Yell - ow Sub - mar - ine, a

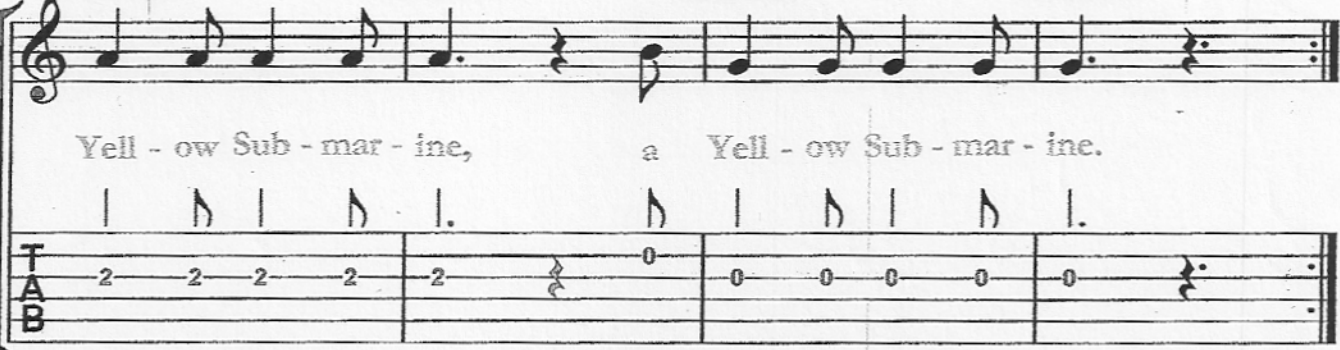


TAB: 3 3 3 3 0 2 2 2 2 2


D D G G





Yell - ow Sub - mar - ine, a Yell - ow Sub - mar - ine.



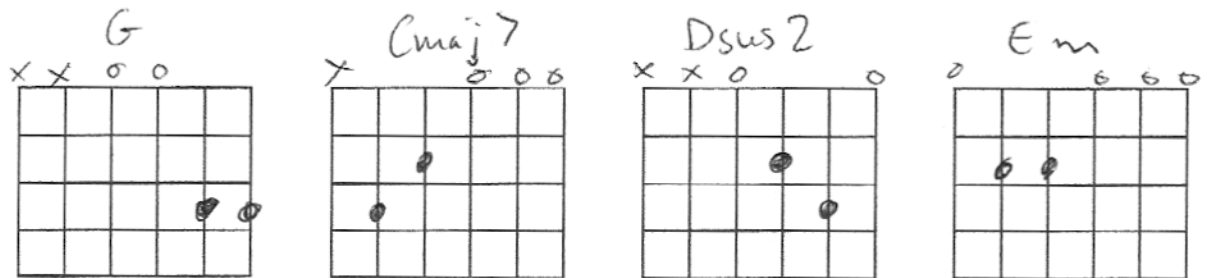
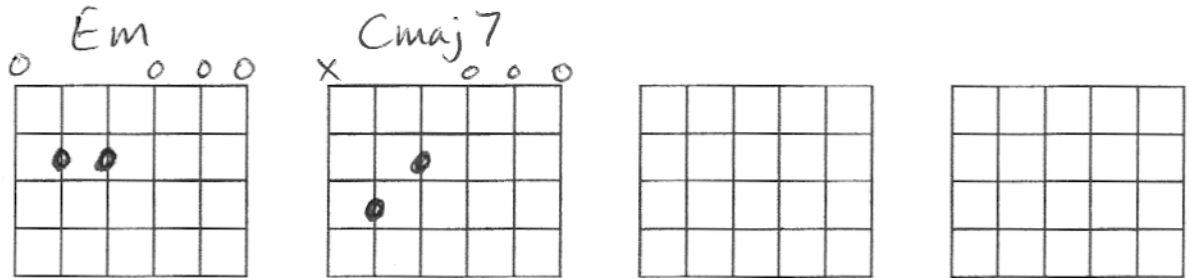
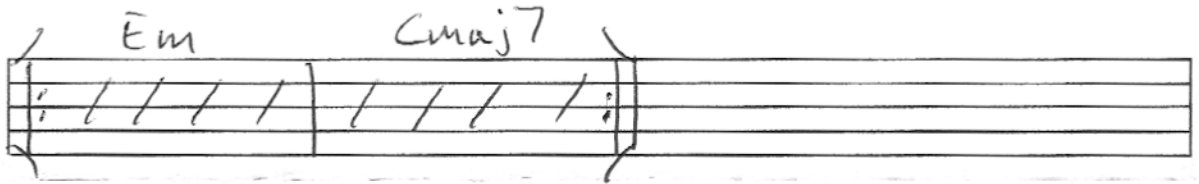
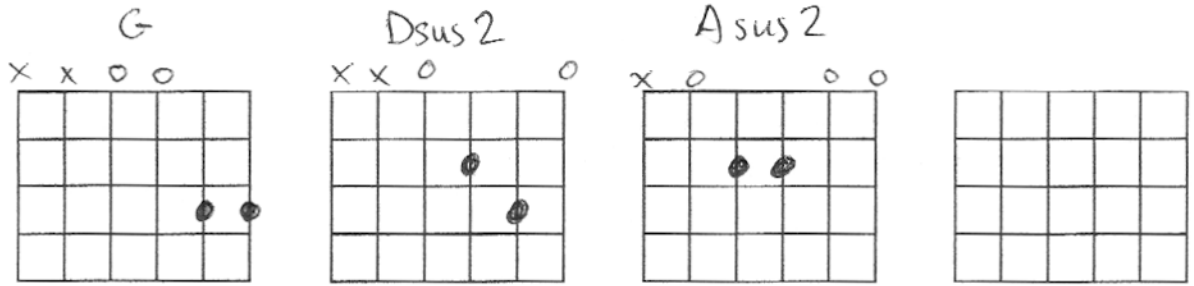
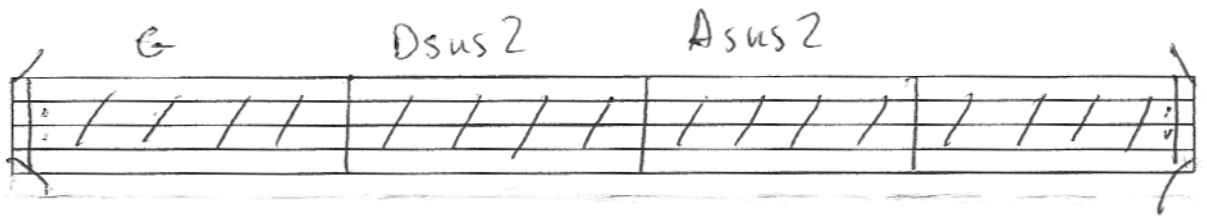
TAB: 2 2 2 2 2 0 0 0 0 0

 **Quick note**

 **Medium note**

 **Longer note**

# 2 Finger Chords





# 2 Finger Chord Exercises :-

①

Em Asus2

②

E7 A7

③

Cmaj7 Dsus2

④

A7 Em Cmaj7 Dsus2

⑤

Dsus2 Asus2

⑥

1. Finger Blues

A -

Handwritten musical notation for the first staff of 'Finger Blues'. It shows a treble clef, a key signature of one sharp (F#), and a 4/4 time signature. The melody consists of quarter notes: A4, B4, C5, B4, A4, G4, F#4, E4, D4, C4, B3, A3, G3, F#3, E3, D3, C3. There are fingerings '2' and '3' written above some notes.

D A

Handwritten musical notation for the second staff of 'Finger Blues'. It shows a treble clef, a key signature of one sharp (F#), and a 4/4 time signature. The melody consists of quarter notes: D4, E4, F#4, G4, A4, G4, F#4, E4, D4, C4, B3, A3, G3, F#3, E3, D3, C3. There are fingerings '2' and '3' written above some notes.

\* BLUES TURNAROUND \*

E D A

Handwritten musical notation for the third staff of 'Finger Blues'. It shows a treble clef, a key signature of one sharp (F#), and a 4/4 time signature. The melody consists of quarter notes: E4, D4, C4, B3, A3, G3, F#3, E3, D3, C3, B2, A2, G2, F#2, E2, D2, C2. There are fingerings '2' and '3' written above some notes.

ROCK 'N' ROLL

ROCK 'N' ROLL

SLOW BLUES / SHUFFLE

SLOW BLUES / SHUFFLE



# Rock Riffs ①

Modern Way - Kaiser Chiefs

①

Iron Man - Black Sabbath

②

Freedom - Jimi Hendrix

③

Smoke On The Water - Deep Purple

④

Smells Like Teen Spirit - Nirvana

⑤

20th Century Boy - T. Rex

⑥

$\nearrow$  - Bend string  
B



# Preliminary Scales

① C Major 1 octave

② G Pentatonic Major 1 octave

③ A Natural minor 1 octave

④ E Blues 1 octave

C Major

G Pent Major

A Natural minor

E Blues